

C7-19-00

A

07/18/00

JC672 U.S. PTO

# UTILITY PATENT APPLICATION TRANSMITTAL (Large Entity)

(Only for new nonprovisional applications under 37 CFR 1.53(b))

Docket No.  
2204/A21

Total Pages in this Submission  
313

## TO THE ASSISTANT COMMISSIONER FOR PATENTS

Box Patent Application  
Washington, D.C. 20231

Transmitted herewith for filing under 35 U.S.C. 111(a) and 37 C.F.R. 1.53(b) is a new utility patent application for an invention entitled:

**SYSTEM, DEVICE, AND METHOD FOR ESTABLISHING AND REMOVING A LABEL SWITCHED PATH IN A COMMUNICATION NETWORK**

and invented by:

Loa Andersson  
Tove Madsen  
Kenneth Sundell

JC675 U.S. PTO  
09/618530  
07/18/00

If a **CONTINUATION APPLICATION**, check appropriate box and supply the requisite information:

Continuation  Divisional  Continuation-in-part (CIP) of prior application No.: \_\_\_\_\_

Which is a:

Continuation  Divisional  Continuation-in-part (CIP) of prior application No.: \_\_\_\_\_

Which is a:

Continuation  Divisional  Continuation-in-part (CIP) of prior application No.: \_\_\_\_\_

Enclosed are:

### Application Elements

1.  Filing fee as calculated and transmitted as described below
2.  Specification having 36 pages and including the following:
  - a.  Descriptive Title of the Invention
  - b.  Cross References to Related Applications (if applicable)
  - c.  Statement Regarding Federally-sponsored Research/Development (if applicable)
  - d.  Reference to Microfiche Appendix (if applicable)
  - e.  Background of the Invention
  - f.  Brief Summary of the Invention
  - g.  Brief Description of the Drawings (if drawings filed)
  - h.  Detailed Description
  - i.  Claim(s) as Classified Below
  - j.  Abstract of the Disclosure

# UTILITY PATENT APPLICATION TRANSMITTAL (Large Entity)

(Only for new nonprovisional applications under 37 CFR 1.53(b))

Docket No.  
2204/A21

Total Pages in this Submission  
313

## Application Elements (Continued)

3.  Drawing(s) (when necessary as prescribed by 35 USC 113)
- a.  Formal                      Number of Sheets \_\_\_\_\_
- b.  Informal                      Number of Sheets                      13
4.  Oath or Declaration
- a.  Newly executed (original or copy)                       Unexecuted
- b.  Copy from a prior application (37 CFR 1.63(d)) (for continuation/divisional application only)
- c.  With Power of Attorney                       Without Power of Attorney
- d.  DELETION OF INVENTOR(S)  
Signed statement attached deleting inventor(s) named in the prior application,  
see 37 C.F.R. 1.63(d)(2) and 1.33(b).
5.  Incorporation By Reference (usable if Box 4b is checked)  
The entire disclosure of the prior application, from which a copy of the oath or declaration is supplied under  
Box 4b, is considered as being part of the disclosure of the accompanying application and is hereby  
incorporated by reference therein.
6.  Computer Program in Microfiche (Appendix)
7.  Nucleotide and/or Amino Acid Sequence Submission (if applicable, all must be included)
- a.  Paper Copy
- b.  Computer Readable Copy (identical to computer copy)
- c.  Statement Verifying Identical Paper and Computer Readable Copy

## Accompanying Application Parts

8.  Assignment Papers (cover sheet & document(s))
9.  37 CFR 3.73(B) Statement (when there is an assignee)
10.  English Translation Document (if applicable)
11.  Information Disclosure Statement/PTO-1449                       Copies of IDS Citations
12.  Preliminary Amendment
13.  Acknowledgment postcard
14.  Certificate of Mailing
- First Class                       Express Mail (Specify Label No.): EL528435085US

# UTILITY PATENT APPLICATION TRANSMITTAL (Large Entity)

(Only for new nonprovisional applications under 37 CFR 1.53(b))

Docket No.  
2204/A21

Total Pages in this Submission  
313

## Accompanying Application Parts (Continued)

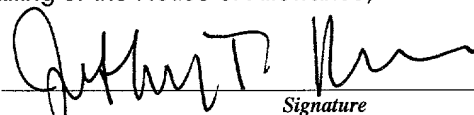
15.  Certified Copy of Priority Document(s) (if foreign priority is claimed)
16.  Additional Enclosures (please identify below):

## Fee Calculation and Transmittal

### CLAIMS AS FILED

For	#Filed	#Allowed	#Extra	Rate	Fee
<b>Total Claims</b>	49	- 20 =	29	x \$18.00	\$522.00
<b>Indep. Claims</b>	8	- 3 =	5	x \$78.00	\$390.00
<b>Multiple Dependent Claims (check if applicable)</b> <input type="checkbox"/>					\$0.00
<b>BASIC FEE</b>					\$690.00
<b>OTHER FEE (specify purpose)</b>					\$0.00
<b>TOTAL FILING FEE</b>					\$1,602.00

- A check in the amount of \_\_\_\_\_ to cover the filing fee is enclosed.
- The Commissioner is hereby authorized to charge and credit Deposit Account No. \_\_\_\_\_ as described below. A duplicate copy of this sheet is enclosed.
- Charge the amount of \_\_\_\_\_ as filing fee.
  - Credit any overpayment.
  - Charge any additional filing fees required under 37 C.F.R. 1.16 and 1.17.
  - Charge the issue fee set in 37 C.F.R. 1.18 at the mailing of the Notice of Allowance, pursuant to 37 C.F.R. 1.311(b).

  
Signature

**Jeffrey T. Klayman, Reg. No. 39,250**  
**BROMBERG & SUNSTEIN LLP**  
125 Summer Street  
Boston, MA 02110  
(617) 443-9292

Dated: July 18, 2000

cc:



**SYSTEM, DEVICE, AND METHOD FOR  
ESTABLISHING AND REMOVING A LABEL SWITCHED PATH  
IN A COMMUNICATION NETWORK**

5

**FIELD OF THE INVENTION**

The present invention relates generally to communication systems, and more particularly to establishing and removing a label switched path in a communication network.

10

**BACKGROUND OF THE INVENTION**

In today's information age, communication devices, such as computers and computer peripherals, are often internetworked over a communication network. A common networking model routes packets of information within the communication network using a networking protocol such as the Internet Protocol (IP) or other network layer protocol. Some networking protocols, such as IP, are considered to be "connectionless" networking protocols. In a connectionless networking protocol, each packet of information includes a network layer address, and each router forwards the packet of information based upon the network layer address according to predetermined signaling and routing protocols, such as the Open Shortest Path First (OSPF) protocol, the Routing Information Protocol (RIP), Hello, Border Gateway Protocol (BGP), RSVP, or other routing protocol.

15  
20  
25

Thus, each router makes an independent forwarding decision for the packet based upon the network layer address. Essentially, each router partitions the entire set of network layer addresses into a number of Forwarding Equivalence Classes (FECs), and each FEC is mapped to a particular outgoing path (or set of paths, in the case of multi-path routing) based upon the routing protocol. The router determines an FEC for each packet of information based upon the network layer address of the packet, and forwards the packet of information to the corresponding outgoing path (or set of paths).

30

Network layer routing requires each router to process each packet of information at the network layer. This is an expensive and time-consuming operation that limits the performance of some routers and even prevents certain devices that do not support the networking protocol from performing routing and other functions on the packets.

5 Label switching can be used to eliminate the network layer processing by certain devices in the communication network. Label switching enables a packet to be transported across a network domain (referred to hereinafter as an "autonomous system" or "AS") using labels rather than the network layer address. Specifically, a Label Switched Path (LSP) is established from an ingress point border device to an egress point border device in the AS. The LSP traverses a number of label switching devices. Each label switching device assigns a short, fixed-length value (i.e., a "label") to each FEC that it supports. When the packet enters the ingress point border device, the ingress point border device uses the network address to assign the packet to a particular FEC, and inserts the corresponding label into the packet, specifically within a packet header. Each subsequent label switching device along the LSP uses the label in the packet to determine the next hop FEC for the packet, and replaces the label in the packet with a new label corresponding to the next hop FEC for the packet. The egress point border device removes the label from the packet. Thus, only the border devices process the packet at the network layer, while the intermediate devices process the packet based upon the label only.

10  
15  
20 The Internet Engineering Task Force (IETF) Multi-Protocol Label Switching (MPLS) working group has defined an MPLS architecture for utilizing label switching for internetworking. MPLS is considered to be "multi-protocol" because it can be used with any network layer protocol, and is not limited to IP. An MPLS framework is described in an IETF Internet Draft document entitled A FRAMEWORK FOR MULTIPROTOCOL LABEL SWITCHING, which is referenced as draft-ietf-mpls-framework-05.txt  
25 (September 1999), and is hereby incorporated by reference in its entirety. The MPLS architecture is described in an IETF Internet Draft document entitled MULTIPROTOCOL LABEL SWITCHING ARCHITECTURE, which is referenced as draft-ietf-mpls-arch-06.txt (August 1999), and is hereby incorporated by reference in its  
30 entirety.

In order to establish and remove LSPs, the various label switching devices exchange label switching information using a signaling protocol. One such signaling protocol that is used specifically for exchanging label switching information is the Label Distribution Protocol (LDP). LDP is described in an IETF Internet Draft document entitled LDP SPECIFICATION, which is referenced as draft-ietf-mpls-ldp-04.txt (May 1999), and is hereby incorporated by reference in its entirety. Label switching information can also be carried (“piggy-backed”) in other signaling and routing protocols, such as OSPF, IS-IS, and RIP.

Each label switching device maintains mapping information for mapping each FEC to a corresponding label. The label mapping information is typically maintained in the various forwarding/routing tables maintained by the label switching device. It is common for the label switching device to maintain a forwarding table for each incoming interface and a forwarding table for each outgoing interface. The label mapping information maintained by the label switching device in the incoming forwarding tables enables the label switching device to quickly forward received packets that include label switching information. The label mapping information maintained by the label switching device in the outgoing forwarding tables enables the label switching device to insert label switching information into packets. For convenience, a forwarding table that includes label mapping information may be referred to as a label information base (LIB).

### SUMMARY OF THE INVENTION

In accordance with one aspect of the invention, a packet-driven mechanism is used for establishing and removing a label switched path rather than using an explicit signaling protocol to exchange label switching information from an upstream label switching device to a downstream label switching device.

In accordance with another aspect of the invention, an upstream label switching device establishes a label switched path to a downstream label switching device by allocating a new label for the label switched path, setting up the label switched path by adding the new label to its forwarding table, and forwarding a labeled packet including the

new label and an indicator indicating that the packet is labeled. Upon receiving the labeled packet from the upstream label switching device, the downstream label switching device sets up the label switched path by adding the new label to its forwarding table, and forwards the packet based upon network layer addressing information in the packet.

5           In accordance with yet another aspect of the invention, the upstream label switching device removes the label switched path by forwarding unlabeled packets to the downstream label switching device. Both devices remove the label from its respective forwarding table.

### BRIEF DESCRIPTION OF THE DRAWINGS

The foregoing and other objects and advantages of the invention will be appreciated more fully from the following further description thereof with reference to the accompanying drawings wherein:

FIG. 1 is a network diagram showing an exemplary communication system for establishing a label switched path in accordance with an embodiment of the invention;

FIG. 2 is a block diagram showing the relevant logic blocks of an exemplary label switching device in accordance with an embodiment of the invention;

FIG. 3A is a logic flow diagram showing exemplary logic for establishing a label switched path by an upstream label switching router in accordance with an embodiment of the invention;

FIG. 3B is a logic flow diagram showing exemplary logic for establishing a label switched path by an upstream label switching router in accordance with embodiment of the invention using an independent mode of operation;

FIG. 3C is a logic flow diagram showing exemplary logic for establishing a label switched path by an upstream label switching router in accordance with an embodiment of the invention using an ordered mode of operation;

FIG. 4 is a logic flow diagram showing exemplary logic for establishing a label switched path by a downstream label switching router in accordance with an embodiment of the invention;

10  
15  
20  
25  
30



FIG. 5 is a logic flow diagram showing exemplary logic for removing a label switched path by an upstream label switching router in accordance with an embodiment of the invention;

FIG. 6 is a logic flow diagram showing exemplary logic for removing a label switched path by a downstream label switching router in accordance with an embodiment of the invention;

FIG. 7 is a block diagram showing the fields of an Ethernet frame (packet) in accordance with an embodiment of the invention;

FIG. 8 is a logic flow diagram showing exemplary logic for forwarding a packet by an upstream label switching router in accordance with an embodiment of the invention;

FIG. 9 is a block diagram showing the relevant logic blocks of the outgoing packet processing logic of an upstream label switching router in accordance with an embodiment of the invention;

FIG. 10 is a logic flow diagram showing exemplary logic for processing a packet by a downstream label switching router in accordance with an embodiment of the invention; and

FIG. 11 is a block diagram showing the relevant logic blocks of the incoming packet processing logic of a downstream label switching router in accordance with an embodiment of the invention.

#### **DETAILED DESCRIPTION OF A PREFERRED EMBODIMENT**

An embodiment of the present invention uses a packet-driven mechanism to establish and remove a label switched path (LSP) between two label switching routers (LSRs) without using an explicit signaling/routing protocol to exchange label switching information. One LSR controls the establishment and removal of the LSP using the packet-driven mechanism. For convenience, the LSR that controls the establishment and removal of the LSP is referred to hereinafter as the “upstream” LSR, while the other LSR is referred to hereinafter as the “downstream” LSR (with the terms “upstream” and



5 LSP mapped in the incoming forwarding table 240, then the incoming packet processing logic 222 forwards the packet based upon the label switching information according to the label mapping information contained in the incoming forwarding table 240. Otherwise, the incoming packet processing logic 222 forwards the packet based upon the network layer addressing information in the packet according to the routing information contained in the routing table 250. The outgoing packet processing logic 224 determines whether the packet is associated with an LSP mapped in the outgoing forwarding table 260, and inserts label switching information to the packet before forwarding the packet to the outgoing interface 230 if the packet is associated with an LSP mapped in the outgoing forwarding table 260.

10  
15  
20  
25 In order to establish a LSP from the upstream LSR 102 to the downstream LSR 106 in an embodiment of the invention, the upstream LSR 102 sets up the LSP by allocating a new label for the LSP and adding the new label to its outgoing forwarding table (LIB) 260, and begins using the new label by inserting the new label into packets along with an indicator that the packets are labeled. Upon receiving a first labeled packet from the upstream LSR 102 including the new label and the indicator, the downstream LSR 106 sets up the LSP by adding the new label to its incoming forwarding table (LIB) 240, and forwards the packet based upon the network layer addressing information in the packet. The incoming forwarding table (LIB) 240 maps the new label to the corresponding FEC and outgoing interface 230 so that subsequent labeled packets can be forwarded based upon the label switching information rather than the network layer addressing information. In this way, a LSP is established from the upstream LSR 102 to the downstream LSR 106 without explicitly setting up the LSP and without using a signaling protocol to exchange label switching information.

Thus, when the upstream LSR 102 decides that it wants a label matched to a forwarding table entry on one of its outgoing interfaces, the upstream LSR 102 allocates a new label, and adds the new label to its outgoing forwarding table 260. The upstream LSR 102 also adds the new label to packets being forwarded over the outgoing interface 230, and sets an indicator in each such packet to indicate that the packets are labeled. The

upstream LSR 102 forwards the labeled packets to the downstream LSR 106 over its outgoing interface 230.

FIG. 3A is a logic flow diagram showing exemplary logic 300 for establishing a LSP by the upstream LSR 102. Beginning at step 302, and upon deciding to establish a new LSP to the downstream LSR 106, in step 304, the logic allocates a new label for the new LSP, in step 306, and sets up the new LSP by adding the new label to the outgoing forwarding table 260, in step 308. The logic inserts the new label in a packet that is destined for the downstream LSR 106, in step 310, and sets an indicator in the packet to indicate that the packet is labeled, in step 312. The logic forwards the labeled packet to the downstream LSR 106 over the outgoing interface 230, in step 314. The logic 300 terminates in step 316.

The decision by the upstream LSR 102 to establish the LSP to the downstream LSR 106 can be made in various ways and at various times. Generally speaking, the upstream LSR 102 may decide to establish the LSP to the downstream LSR 106 independently of whether label switching is used on other communication links, or the upstream LSR 102 may decide to establish the LSP to the downstream LSR 106 upon determining that label switching is used on another communication link (and particularly on the communication link to the upstream LSR 102 from its upstream neighboring device). For convenience, the former approach in which the upstream LSR 102 decides to establish the LSP to the downstream LSR 106 independently of whether label switching is used on other communication links is referred to hereinafter as the “independent mode” of operation, and the latter approach in which the upstream LSR 102 decides to establish the LSP to the downstream LSR 106 upon determining that label switching is used on another communication link is referred to hereinafter as the “ordered mode” of operation.

In the independent mode of operation, the upstream LSR 102 decides to establish the LSP to the downstream LSR 106 independently of whether label switching is used on other communication links. Specifically, the upstream LSR 102 makes an independent decision to establish the LSP to the downstream LSR 106, and sets up the LSP by mapping the new label to a particular FEC/outgoing interface in the outgoing forwarding table.

Subsequently, the upstream LSR 102 labels and forwards packets using the mapping that is set up in the outgoing forwarding table.

FIG. 3B is a logic flow diagram showing exemplary independent mode logic 320 for establishing a LSP by the upstream LSR 102. Beginning at step 322, and upon  
5 deciding to establish a new LSP for a particular FEC/outgoing interface to the downstream LSR 106, in step 324, the logic allocates a new label for the new LSP, in step 326, and sets up the new LSP by mapping the new label to the FEC/outgoing interface in the outgoing forwarding table 260, in step 328. Upon receiving a packet, in step 330, the logic proceeds to determine the FEC/outgoing interface for the packet based upon the network layer addressing information in the packet, in step 332. Assuming the logic determines that the FEC/outgoing interface for the packet is associated with the new LSP, in step 334, the logic inserts the new label into the packet, in step 336, and sets the indicator in the packet to indicate that the packet is labeled, in step 338. The logic forwards the labeled packet to the downstream LSR 106 over the outgoing interface 230, in step 340. The logic 320 terminates in step 342.

In the ordered mode of operation, the upstream LSR 102 decides to establish the LSP to the downstream LSR 106 upon determining that label switching is used on another communication link. For example, the upstream LSR 102 may decide to establish the LSP to the downstream LSR 106 when a LSP is established to the upstream LSR 102 from its upstream neighboring device (not shown) using an explicit signaling protocol (e.g., LDP),  
20 or the upstream LSR 102 may decide to establish the LSP to the downstream LSR 106 upon receiving a labeled packet from its upstream neighboring device. The upstream LSR 102 sets up the LSP by mapping the new label to the appropriate FEC/outgoing interface in the outgoing forwarding table (which, for the latter case, is the FEC/outgoing interface associated with the labeled packet that is received). The upstream LSR 102 labels and forwards packets using the mapping that is set up in the outgoing forwarding table.

FIG. 3C is a logic flow diagram showing exemplary ordered mode logic 350 for establishing a LSP by the upstream LSR 102. Beginning at step 352, and upon receiving a labeled packet over the incoming interface 210, in step 354, the logic decides to establish a  
30 new LSP to the downstream LSR 106, in step 356. The logic allocates a new label for the

008T2010E58T950

5

20

25

30

new LSP, in step 358. The logic also determines the FEC/outgoing interface for the packet based upon the network layer addressing information in the packet, in step 360. The logic sets up the LSP by mapping the new label to the FEC/outgoing interface in the outgoing forwarding table, in step 362. The logic inserts the new label into the packet, in step 364, and sets the indicator in the packet to indicate that the packet is labeled, in step 366. The logic forwards the labeled packet to the downstream LSR 106 over the outgoing interface 230, in step 368. The logic 350 terminates in step 370.

When the downstream LSR 106 receives the labeled packet from the upstream LSR 102 including the new label, the downstream LSR 106 determines the FEC and outgoing interface for the packet (which, in this example, is the outgoing interface 230) based upon the network layer addressing information in the packet, and adds the new label to its incoming forwarding table 240. The incoming forwarding table maps the new label to the corresponding FEC and outgoing interface so that subsequent packets can be forwarded based upon the label switching information rather than the network layer addressing information. The downstream LSR 106 forwards the packet over its outgoing interface 230 based upon the network layer addressing information.

FIG. 4 is a logic flow diagram showing exemplary logic 400 for establishing the LSP by the downstream LSR 106. Beginning at step 402, and upon receiving a labeled packet including a new label from the upstream LSR 102 over the incoming interface 210, in step 404, the logic determines the FEC and outgoing interface for the packet based upon the network layer addressing information in the packet in step 406. The logic sets up the LSP by adding the new label to the incoming forwarding table 240, in step 408. The logic forwards the packet over the outgoing interface 230 with or without label switching information, as determined by the packet processing logic 220.

When the upstream LSR 102 wants to stop using the LSP, the upstream LSR 102 forwards unlabeled packets to the downstream LSR 106. The upstream LSR 102 does not insert a label into the packets and does not set the indicator in the packets. Each LSR (102, 106) typically removes the label from its respective forwarding table after determining that the label has been unused for a predetermined amount of time.

5  
10  
15  
20  
25



an assigned number authority) is included in the ethertype field of the packet to indicate that the packet is labeled.

FIG. 7 shows the format of an exemplary Ethernet frame (packet) 700 that may be used to convey label switching information. The Ethernet frame (packet) 700 includes a preamble field 702, a destination address field 704, a source address field 706, an ethertype field 708, a payload field 710, and a cyclic redundancy check (CRC) field 712. When the upstream LSR 102 decides to use label switching, the upstream LSR 102 inserts label switching information along with packet information into the payload field 710 and sets the ethertype field 708 to indicate that the payload field 710 includes label switching information. When the upstream LSR 102 decides to stop using label switching, the upstream LSR 102 does not insert label switching information into the payload field 710 and does not set the ethertype field 708 to indicate that the payload field 710 does not include label switching information. The downstream LSR 106 examines the ethertype field to determine whether a particular packet is labeled or unlabeled, and processes the packet accordingly.

It should be noted that the downstream LSR 106 may use the same packet-based mechanism for establishing and removing a LSP to the upstream LSR 102 and/or to a further downstream LSR (not shown). In this case, the downstream LSR 106 would be considered the “upstream” device for the additional LSP.

During the course of processing packets, the upstream LSR 102 must decide whether or not to label each individual packet. If a particular packet is associated with an existing LSP, then the upstream LSR 102 labels the packet before forwarding the labeled packet. If the upstream LSR 102 decides to establish a new LSP, then the upstream LSR 102 allocates a new label for the LSP, sets up the LSP, and labels the packet using the new label before forwarding the labeled packet. If the packet is not associated with an existing or new LSP, then the upstream LSR 102 forwards the unlabeled packet.

FIG. 8 is a logic flow diagram showing exemplary logic 800 for forwarding a packet by the upstream LSR 102, and in particular by the outgoing packet processing logic 224 of the upstream LSR 102. Beginning at step 802, and upon obtaining a packet to be forwarded, the logic determines whether the packet is associated with an existing LSP

00272071000  
0610530  
0610530

5

20

25

30



5 mapped in the outgoing forwarding table 260, in step 804. If the packet is associated with an existing LSP (YES in step 806), then the logic labels the packet, in step 814, and forwards the labeled packet to the outgoing interface 230, in step 816. If the packet is not associated with an existing LSP (NO in step 806), then the logic decides whether to establish a new LSP, in step 808. If the logic decides not to establish a new LSP (NO in step 808), then the logic forwards the unlabeled packet to the outgoing interface, in step 816. If the logic decides to establish a new LSP (YES in step 808), then the logic allocates a new label for the LSP, in step 810, and sets up the new LSP in the outgoing forwarding table 260 using the new label, in step 812. The logic also labels the packet, in step 814, and forwards the labeled packet to the outgoing interface 230, in step 816. The logic 800 terminates in step 899.

10  
15  
20  
25  
30  
FIG. 9 is a block diagram showing the relevant logic blocks of the outgoing packet processing logic 224 of the upstream LSR 102. The outgoing packet processing logic 224 includes, among other things, outgoing label switching logic 902, label allocation logic 904, outgoing LSP setup logic 906, and packet labeling logic 908. The outgoing label switching logic 902 receives packets over the interface 223, and decides for each packet whether to forward the packet labeled or unlabeled. The outgoing label switching logic 902 uses the outgoing forwarding table 260 to determine whether the packet is associated with an existing LSP, a new LSP to be established, or no LSP. If the packet is not associated with an existing or new LSP, then the outgoing label switching logic 902 forwards the packet unlabeled to the outgoing interface 230. If the packet is associated with an existing LSP, then the outgoing label switching logic 902 forwards the packet to the packet labeling logic (indicated by the arrow 909), which uses the outgoing forwarding table 260 to label the packet and forward the labeled packet to the outgoing interface 230. If the packet is associated with a new LSP to be established, then the outgoing label switching logic 902 forwards the packet to the label allocation logic 904 (indicated by the arrow 903). The label allocation logic 904 allocates a new label for the LSP, and forwards the packet to the outgoing LSP setup logic 906 (indicated by the arrow 905). The outgoing LSP setup logic 906 sets up the new LSP by adding the new label to the outgoing forwarding table 260, and forwards the packet to the packet labeling logic 908 (indicated



logic forwards the packet based upon the network layer addressing information in the packet, in step 1018. If the packet is labeled (YES in step 1008), then the logic proceeds to search for the label in the incoming forwarding table 240, in step 1010. If the logic does not find the label in the incoming forwarding table 230 (NO in step 1012), indicating that the label is a new label for a LSP to be established, then the logic determines the FEC and outgoing interface for the packet based upon the network layer addressing information in the packet, in step 1014. The logic sets up the new LSP in the incoming forwarding table, in step 1016, and forwards the packet based upon the network layer addressing information, in step 1018. If the logic finds the label in the incoming forwarding table (YES in step 1012), then the logic forwards the packet based upon the label in the packet, in step 1020. The logic 1000 terminates in step 1099.

FIG. 11 is a block diagram showing the relevant logic blocks of the incoming packet processing logic 222 of the downstream LSR 106. The incoming packet processing logic 222 includes, among other things, label detection logic 1102, routing logic 1104, incoming label switching logic 1106, and incoming LSP setup logic 1108. The label detection logic 1102 receives packets from the incoming interface 210, and determines for each packet whether the packet is labeled or unlabeled. If the packet is unlabeled, then the label detection logic 1102 forwards the packet to the routing logic 1104 (indicated by the arrow 1103), which forwards the packet over the interface 223 based upon the network layer addressing information in the packet according to routing information contained in the routing table 250. If the packet is labeled, then the label detection logic 1102 forwards the packet to the incoming label switching logic 1106 (indicated by the arrow 1105). The incoming label switching logic 1106 uses the incoming forwarding table 240 to determine whether the packet is associated with an existing LSP or a new LSP to be established. If the packet is associated with an existing LSP, then the incoming label switching logic 1106 forwards the packet over the interface 223 based upon the label switching information in the packet according to the label mapping information contained in the incoming forwarding table 240. If the packet is associated with a new LSP to be established, then the incoming label switching logic 106 forwards the packet to the incoming LSP setup logic 1108 (indicated by the arrow 1107), which sets up the new LSP

5  
10  
15  
20  
25  
30

by adding the new label to the incoming forwarding table 240 and mapping the new label to the corresponding FEC and outgoing interface based upon the network layer addressing information in the packet as well as routing information contained in the routing table 250. The incoming LSP setup logic 1108 forwards the packet to the routing logic 1104 (indicated by the arrow 1109), which forwards the packet over the interface 223 based upon the network layer addressing information in the packet according to routing information contained in the routing table 250.

Although an exemplary embodiment of the invention utilizes the ethertype field to indicate whether the packet includes label switching information, such a mechanism for indicating that the packet is labeled is only practical for media that include an ethertype field, such as Ethernet and the Point-to-Point Protocol (PPP). Other mechanisms for indicating that the packet is labeled are possible, and the present invention is in no way limited to any particular mechanism for indicating that the packet is labeled. For example, a single bit in a header field can be used to indicate whether or not the packet is labeled (e.g., setting the bit to the value one indicates that the packet is labeled, while setting the bit to the value zero indicates that the packet is not labeled). Other mechanisms for indicating that the packet is labeled will be apparent to a skilled artisan. Such alternative mechanisms for indicating that the packet is labeled are useful for situations in which the packet includes no ethertype field.

It should be noted that the term "router" is used herein to describe a communication device that may be used in a communication system, and should not be construed to limit the present invention to any particular communication device type. Thus, a communication device may include, without limitation, a bridge, router, bridge-router (brouter), switch, node, or other communication device.

It should also be noted that the term "packet" is used herein to describe a communication message that may be used by a communication device (e.g., created, transmitted, received, stored, or processed by the communication device) or conveyed by a communication medium, and should not be construed to limit the present invention to any particular communication message type, communication message format, or communication protocol. Thus, a communication message may include, without

limitation, a frame, packet, datagram, user datagram, cell, or other type of communication message.

It should also be noted that the logic flow diagrams are used herein to demonstrate various aspects of the invention, and should not be construed to limit the present invention to any particular logic flow or logic implementation. The described logic may be partitioned into different logic blocks (e.g., programs, modules, functions, or subroutines) without changing the overall results or otherwise departing from the true scope of the invention. Often times, logic elements may be added, modified, omitted, performed in a different order, or implemented using different logic constructs (e.g., logic gates, looping primitives, conditional logic, and other logic constructs) without changing the overall results or otherwise departing from the true scope of the invention.

The present invention may be embodied in many different forms, including, but in no way limited to, computer program logic for use with a processor (e.g., a microprocessor, microcontroller, digital signal processor, or general purpose computer), programmable logic for use with a programmable logic device (e.g., a Field Programmable Gate Array (FPGA) or other PLD), discrete components, integrated circuitry (e.g., an Application Specific Integrated Circuit (ASIC)), or any other means including any combination thereof. In a typical embodiment of the present invention, predominantly all of the described logic is implemented as a set of computer program instructions that is converted into a computer executable form, stored as such in a computer readable medium, and executed by a microprocessor within a LSR under the control of an operating system.

Computer program logic implementing all or part of the functionality previously described herein may be embodied in various forms, including, but in no way limited to, a source code form, a computer executable form, and various intermediate forms (e.g., forms generated by an assembler, compiler, linker, or locator). Source code may include a series of computer program instructions implemented in any of various programming languages (e.g., an object code, an assembly language, or a high-level language such as Fortran, C, C++, JAVA, or HTML) for use with various operating systems or operating environments. The source code may define and use various data structures and communication messages. The source code may be in a computer executable form (e.g., via an interpreter), or the

source code may be converted (*e.g.*, via a translator, assembler, or compiler) into a computer executable form.

5 The computer program may be fixed in any form (*e.g.*, source code form, computer executable form, or an intermediate form) either permanently or transitorily in a tangible storage medium, such as a semiconductor memory device (*e.g.*, a RAM, ROM, PROM, EEPROM, or Flash-Programmable RAM), a magnetic memory device (*e.g.*, a diskette or fixed disk), an optical memory device (*e.g.*, a CD-ROM), or other memory device. The computer program may be fixed in any form in a signal that is transmittable to a computer using any of various communication technologies, including, but in no way limited to, analog technologies, digital technologies, optical technologies, wireless technologies, networking technologies, and internetworking technologies. The computer program may be distributed in any form as a removable storage medium with accompanying printed or electronic documentation (*e.g.*, shrink wrapped software), preloaded with a computer system (*e.g.*, on system ROM or fixed disk), or distributed from a server or electronic bulletin board over the communication system (*e.g.*, the Internet or World Wide Web).

10  
15  
20 Hardware logic (including programmable logic for use with a programmable logic device) implementing all or part of the functionality previously described herein may be designed using traditional manual methods, or may be designed, captured, simulated, or documented electronically using various tools, such as Computer Aided Design (CAD), a hardware description language (*e.g.*, VHDL or AHDL), or a PLD programming language (*e.g.*, PALASM, ABEL, or CUPL).

25 Programmable logic may be fixed either permanently or transitorily in a tangible storage medium, such as a semiconductor memory device (*e.g.*, a RAM, ROM, PROM, EEPROM, or Flash-Programmable RAM), a magnetic memory device (*e.g.*, a diskette or fixed disk), an optical memory device (*e.g.*, a CD-ROM), or other memory device. The programmable logic may be fixed in a signal that is transmittable to a computer using any of various communication technologies, including, but in no way limited to, analog technologies, digital technologies, optical technologies, wireless technologies, networking technologies, and internetworking technologies. The programmable logic may be  
30 distributed as a removable storage medium with accompanying printed or electronic

documentation (*e.g.*, shrink wrapped software), preloaded with a computer system (*e.g.*, on system ROM or fixed disk), or distributed from a server or electronic bulletin board over the communication system (*e.g.*, the Internet or World Wide Web).

5 Thus, the present invention may be embodied as a method for controlling a label switched path by a first label switching device to a second label switching device in a communication network. The method involves deciding to establish a label switched path to the second label switching device, allocating a new label for the label switched path to the second label switched device, generating a labeled packet including the new label, and forwarding the labeled packet to the second label switching device without first explicitly establishing the label switched path to the second label switching device using a signaling protocol. Generating the labeled packet involves inserting the new label into the packet and setting an indicator, such as an ethertype field or header bit, in the packet to indicate that the packet is labeled. The method may also involve adding a forwarding table entry to a forwarding table that is typically associated with the outgoing interface. The forwarding table entry maps the new label to a forwarding equivalence class and outgoing interface for the label switched path. The method may also involve deciding to stop using the label switched path and forwarding unlabeled packets to the second label switching device, in which case the forwarding table entry is removed from the forwarding table, typically after a predetermined amount of time.

20 The present invention may also be embodied as a label switching device having at least an outgoing interface providing an interface for communicating with a second label switching device and packet processing logic for allocating a new label for a new label switched path to the second label switching device and for forwarding a labeled packet including the new label to the second label switching device over the outgoing interface  
25 without first explicitly establishing the new label switched path to the second label switching device using a signaling protocol. The packet processing logic includes label switching logic for deciding to establish the new label switched path, label allocation logic for allocating the new label for the new label switched path, and packet labeling logic for inserting the new label in the packet and setting an indicator in the packet, such as an  
30 ethertype field or header bit, to indicate that the packet is labeled. The label switching

5 device also includes a forwarding table associated with the outgoing interface. The packet processing logic additionally includes label switched path setup logic for adding a forwarding table entry to the forwarding table. The forwarding table entry maps the new label to a forwarding equivalence class and the outgoing interface for the label switched path. The packet processing logic forwards unlabeled packets to the second label switching device over the outgoing interface upon deciding to stop using the label switched path, in which case the forwarding table entry is removed from the forwarding table, typically after a predetermined amount of time.

10 The present invention may also be embodied as a program product for use in a first label switching device. The program product includes packet processing logic for allocating a new label for a new label switched path to a second label switching device and for forwarding a labeled packet including the new label to the second label switching device over an outgoing interface without first explicitly establishing the new label switched path to the second label switching device using a signaling protocol. The packet processing logic includes label switching logic for deciding to establish the new label switched path, label allocation logic for allocating the new label for the new label switched path, and packet labeling logic for inserting the new label in the packet and setting an indicator in the packet, such as an ethertype field or header bit, to indicate that the packet is labeled. The packet processing logic also includes label switched path setup logic for adding a forwarding table entry to a forwarding table. The forwarding table entry maps the new label to a forwarding equivalence class and the outgoing interface for the label switching device over the outgoing interface upon deciding to stop using the label switched path, in which case the forwarding table entry is removed from the forwarding table, typically after a predetermined amount of time.

20  
25  
30 The present invention may also be embodied as a method for controlling a label switched path by a first label switching device in a communication network. The method involves receiving a labeled packet including a new label from a second label switching device without first explicitly establishing the label switched path from the second label switching device to the first label switching device using a signaling protocol and setting



5 up the label switched path using the new label. Setting up the label switched path using the new label involves determining a forwarding equivalence class and outgoing interface for the packet based upon network layer addressing information in the packet, and adding a forwarding table entry to a forwarding table. The forwarding table entry mapping the new label to the forwarding equivalence class and outgoing interface for the packet. The packet is forwarded based upon the network layer addressing information in the packet.

10 The present invention may also be embodied as a label switching device having at least an incoming interface providing an interface for communicating with a second label switching device and packet processing logic for receiving a labeled packet including a new label from the second label switching device over the incoming interface without first explicitly establishing the label switched path from the second label switching device to the first label switching device using a signaling protocol and for setting up the label switched path using the new label. The packet processing logic includes label detection logic for determining that the received packet is labeled, label switching logic for determining that the labeled packet is not associated with an existing label switched path, and label switched path setup logic for setting up the label switched path using the new label. The label switched path setup logic determines a forwarding equivalence class and outgoing interface for the packet based upon network layer addressing information in the packet and adds a forwarding table entry to a forwarding table. The forwarding table entry maps the new label to the forwarding equivalence class and outgoing interface for the packet. The packet processing logic includes routing logic for forwarding the packet based upon the network layer addressing information in the packet.

20 The present invention may also be embodied as a program product for use in a first label switching device. The program product includes packet processing logic for receiving a labeled packet including a new label from the second label switching device over an incoming interface without first explicitly establishing the label switched path from the second label switching device to the first label switching device using a signaling protocol and to setting up the label switched path using the new label. The packet processing logic includes label detection logic for determining that the received packet is labeled, label switching logic for determining that the labeled packet is not associated with

25

30

an existing label switched path, and label switched path setup logic for setting up the label switched path using the new label. The label switched path setup logic determines a forwarding equivalence class and outgoing interface for the packet based upon network layer addressing information in the packet and adds a forwarding table entry to a forwarding table. The forwarding table entry maps the new label to the forwarding equivalence class and outgoing interface for the packet. The packet processing logic also includes routing logic for forwarding the packet based upon the network layer addressing information in the packet.

The present invention may also be embodied as a communication system including a first (upstream) label switching device in communication with a second (downstream) label switching device over a communication network. The first label switching device and the second label switching device utilize a packet-driven mechanism to establish a label switched path from the first label switching device to the second label switching device without first explicitly establishing the label switched path using a signaling protocol. In particular, the first label switching device allocates a new label for the label switched path and forwards a labeled packet including the new label to the second label switching device over the communication network upon deciding to establish a new label switched path to the second label switching device. The second label switching device receives the labeled packet from the first label switching device and sets up the new label switched path using the new label from the labeled packet. When the label switched path is no longer needed, the first label switching device forwards unlabeled packets to the second label switching device, and the second label switching device removes the label switched path.

Various embodiments of the present invention generate and utilize a novel protocol message including a new label for a label switched path to be established and a label indicator indicating that the protocol message is labeled. Exemplary label indicators include an ethertype field and a header bit.

The present invention may be embodied in other specific forms without departing from the scope of the invention. The described embodiments are to be considered in all respects only as illustrative and not restrictive.

We claim:

1. A method for establishing a label switched path by a first label switching device to a second label switching device in a communication network without using an explicit signaling protocol, the method comprising:

5

allocating a new label for the label switched path;  
generating a labeled packet including the new label; and  
forwarding the labeled packet to the second label switching device.

2. The method of claim 1, wherein generating the labeled packet comprises:  
inserting the new label into the packet; and  
setting an indicator in the packet to indicate that the packet is labeled.

3. The method of claim 2, wherein the indicator is an ethertype field of the packet, and wherein setting the indicator in the packet to indicate that the packet is labeled comprises setting the ethertype field to a predetermined value.

4. The method of claim 2, wherein the indicator is a bit in a header field of the packet, and wherein setting the indicator in the packet to indicate that the packet is labeled comprises setting the bit to a predetermined value.

20

5. The method of claim 1, further comprising:  
adding a forwarding table entry to a forwarding table, the forwarding table entry mapping the new label to a forwarding equivalence class and outgoing interface for the label switched path.

25

6. The method of claim 5, wherein the forwarding table is associated with the outgoing interface for the label switched path.

7. The method of claim 1, further comprising:

30

terminating use of the label switched path; and  
forwarding unlabeled packets to the second label switching device.

8. The method of claim 7, further comprising:

5 removing a forwarding table entry from a forwarding table, the forwarding table  
entry mapping the new label to a forwarding equivalence class and outgoing interface for  
the label switched path.

008720 0557960

9. A label switching device comprising:  
an outgoing interface providing an interface for communicating with a second label switching device; and

5 packet processing logic operably coupled to allocate a new label for a new label switched path to the second label switching device and to forward a labeled packet including the new label to the second label switching device over the outgoing interface without first explicitly establishing the new label switched path to the second label switching device using a signaling protocol.

10. The label switching device of claim 9, wherein the packet processing logic comprises:

label switching logic operably coupled to decide to establish the new label switched path;

label allocation logic operably coupled to allocate the new label for the new label switched path; and

packet labeling logic operably coupled to insert the new label in the packet and set an indicator in the packet to indicate that the packet is labeled.

11. The label switching device of claim 10, wherein the indicator is an ethertype field of the packet, and wherein the packet labeling logic is operably coupled to set the ethertype field to a predetermined value to indicate that the packet is labeled.

12. The label switching device of claim 10, wherein the indicator is a bit in a header field of the packet, and wherein the packet labeling logic is operably coupled to set the bit to a predetermined value to indicate that the packet is labeled.

13. The label switching device of claim 9, further comprising a forwarding table associated with the outgoing interface.

008720150EST96

20

25

14. The label switching device of claim 13, wherein the packet processing logic further comprises label switched path setup logic operably coupled to add a forwarding table entry to the forwarding table, the forwarding table entry mapping the new label to a forwarding equivalence class and the outgoing interface for the label switched path.

5

15. The label switching device of claim 9, wherein the packet processing logic is operably coupled to forward unlabeled packets to the second label switching device over the outgoing interface upon deciding to stop using the label switched path.

16. The label switching device of claim 15, wherein the packet processing logic is operably coupled to remove a forwarding table entry from a forwarding table associated with the outgoing interface, the forwarding table entry mapping the new label to a forwarding equivalence class and the outgoing interface for the label switched path.

0015530-071800  
"SECRET"

17. A program product for use in a first label switching device, the program product comprising packet processing logic operably coupled to allocate a new label for a new label switched path to a second label switching device and to forward a labeled packet including the new label to the second label switching device over an outgoing interface without first explicitly establishing the new label switched path to the second label switching device using a signaling protocol.

5

18. The program product label switching device of claim 19, wherein the packet processing logic comprises:

label switching logic programmed to decide to establish the new label switched path;

label allocation logic programmed to allocate the new label for the new label switched path; and

packet labeling logic programmed to insert the new label in the packet and set an indicator in the packet to indicate that the packet is labeled.

19. The program product of claim 18, wherein the indicator is an ethertype field of the packet, and wherein the packet labeling logic is programmed to set the ethertype field to a predetermined value to indicate that the packet is labeled.

20

20. The program product of claim 18, wherein the indicator is a bit in a header field of the packet, and wherein the packet labeling logic is programmed to set the bit to a predetermined value to indicate that the packet is labeled.

25

21. The program product of claim 17, wherein the packet processing logic further comprises label switched path setup logic programmed to add a forwarding table entry to a forwarding table, the forwarding table entry mapping the new label to a forwarding equivalence class and the outgoing interface for the label switched path.

22. The program product of claim 17, wherein the packet processing logic is programmed to forward unlabeled packets to the second label switching device over the outgoing interface upon deciding to stop using the label switched path.

5 23. The program product of claim 22, wherein the packet processing logic is operably coupled to remove a forwarding table entry from a forwarding table associated with the outgoing interface, the forwarding table entry mapping the new label to a forwarding equivalence class and the outgoing interface for the label switched path.

09648530 074300



24. A method for establishing a label switched path to a first label switching device in a communication network without using an explicit signaling protocol, the method comprising:

receiving a labeled packet including a new label from a second label switching device; and

setting up the label switched path using the new label.

25. The method of claim 24, wherein receiving the labeled packet comprises receiving a packet including the new label and an indicator indicating that the packet is labeled.

26. The method of claim 25, wherein the indicator is an ethertype field of the packet, and wherein the ethertype field is set to a predetermined value to indicate that the packet is labeled.

27. The method of claim 25, wherein the indicator is a bit in a header field of the packet, and wherein the bit is set to a predetermined value to indicate that the packet is labeled.

28. The method of claim 24, wherein setting up the label switched path using the new label comprises:

determining a forwarding equivalence class and outgoing interface for the packet based upon network layer addressing information in the packet; and

adding a forwarding table entry to a forwarding table, the forwarding table entry mapping the new label to the forwarding equivalence class and outgoing interface for the packet.

29. The method of claim 26, further comprising:

forwarding the packet based upon the network layer addressing information in the packet.

10  
15  
20  
25

-30-

30. A label switching device comprising:  
an incoming interface providing an interface for communicating with a second  
label switching device; and  
packet processing logic operably coupled to receive a labeled packet including a  
new label from the second label switching device over the incoming interface without first  
explicitly establishing the label switched path from the second label switching device to  
the first label switching device using a signaling protocol and to set up the label switched  
path using the new label.

31. The label switching device of claim 30, wherein the packet processing logic  
comprises:  
label detection logic operably coupled to determine that the received packet is  
labeled;  
label switching logic responsive to the label detection logic and operably coupled  
to determine that the labeled packet is not associated with an existing label switched path;  
and  
label switched path setup logic responsive to the label switching logic and operably  
coupled to set up the label switched path using the new label.

32. The label switching device of claim 31, wherein the labeled packet includes the  
new label and an indicator indicating that the packet is labeled, and wherein the label  
detection logic is operably coupled to determine that the received packet is labeled based  
upon the indicator.

33. The label switching device of claim 32, wherein the indicator is an ethertype field  
of the packet, and wherein the ethertype field is set to a predetermined value to indicate  
that the packet is labeled.

5  
20  
25

34. The label switching device of claim 32, wherein the indicator is a bit in a header field of the packet, and wherein the bit is set to a predetermined value to indicate that the packet is labeled.

5 35. The label switching device of claim 31, wherein the label switched path setup logic is operably coupled to determine a forwarding equivalence class and outgoing interface for the packet based upon network layer addressing information in the packet and add a forwarding table entry to a forwarding table, the forwarding table entry mapping the new label to the forwarding equivalence class and outgoing interface for the packet.

36. The label switching device of claim 31, further comprising:  
routing logic responsive to the label switched path setup logic and operably coupled to forward the packet based upon the network layer addressing information in the packet.

008720"088786

5 37. A program product for use in a first label switching device, the program product comprising packet processing logic programmed to receive a labeled packet including a new label from the second label switching device over an incoming interface without first explicitly establishing the label switched path from the second label switching device to the first label switching device using a signaling protocol and to set up the label switched path using the new label.

38. The program product of claim 37, wherein the packet processing logic comprises:  
label detection logic programmed to determine that the received packet is labeled;  
label switching logic responsive to the label detection logic and programmed to determine that the labeled packet is not associated with an existing label switched path;  
and  
label switched path setup logic responsive to the label switching logic and programmed to set up the label switched path using the new label.

39. The program product of claim 38, wherein the labeled packet includes the new label and an indicator indicating that the packet is labeled, and wherein the label detection logic is programmed to determine that the received packet is labeled based upon the indicator.

40. The program product of claim 39, wherein the indicator is an ethertype field of the packet, and wherein the ethertype field is set to a predetermined value to indicate that the packet is labeled.

41. The program product of claim 39, wherein the indicator is a bit in a header field of the packet, and wherein the bit is set to a predetermined value to indicate that the packet is labeled.

42. The program product of claim 38, wherein the label switched path setup logic is programmed to determine a forwarding equivalence class and outgoing interface for the

0087071500

20

25

30

packet based upon network layer addressing information in the packet and to add a forwarding table entry to a forwarding table, the forwarding table entry mapping the new label to the forwarding equivalence class and outgoing interface for the packet.

- 5      43.      The program product of claim 38, further comprising:  
         routing logic responsive to the label switched path setup logic and programmed to  
         forward the packet based upon the network layer addressing information in the packet.

008720" 0E5B79E0

5 44. A communication system comprising a first label switching device in communication with a second label switching device over a communication network, wherein the first label switching device and the second label switching device use a packet-driven mechanism to establish a label switched path from the first label switching device to the second label switching device without first explicitly establishing the label switched path using a signaling protocol.

45. The communication system of claim 44, wherein the first label switching device is operably coupled to allocate a new label for the label switched path and to forward a labeled packet including the new label to the second label switching device over the communication network upon deciding to establish a new label switched path to the second label switching device, and wherein the second label switching device is operably coupled to receive the labeled packet from the first label switching device and to set up the new label switched path using the new label from the labeled packet.

46. The communication system of claim 45, wherein the first label switching device is operably coupled to forward unlabeled packets to the second label switching device upon deciding to remove the label switched path, and wherein the second label switching device is operably coupled to remove the label switched path.

0087271800 0618530 271800

47. A communication message comprising a new label for a label switched path to be established and a label indicator indicating that the protocol message is labeled.

5 48. The communication message of claim 47, wherein the label indicator comprises an ether-type field having a predetermined value for indicating that the protocol message is labeled.

49. The communication message of claim 47, wherein the label indicator comprises a bit in a header field.

002720"00000000

### ABSTRACT OF THE DISCLOSURE

5 A system, device, and method for establishing and removing a label switched path  
in a communication network uses a packet-driven mechanism rather than using an explicit  
signaling protocol to exchange label switching information from an upstream label  
switching device to a downstream label switching device. In order to establish a label  
switched path from the upstream label switching device to the downstream label switching  
device, the upstream label switching device allocates a new label for the label switched  
10 path, sets up the label switched path by adding the new label to its forwarding table, and  
forwards a labeled packet including the new label and an indicator indicating that the  
packet is labeled. Upon receiving the labeled packet from the upstream label switching  
device, the downstream label switching device sets up the label switched path by adding  
the new label to its forwarding table, and forwards the packet based upon network layer  
addressing information in the packet. In order to remove the label switched path, the  
upstream label switching device forwards unlabeled packets to the downstream label  
switching device, and both devices remove the label from its respective forwarding table.

10  
20  
30  
40  
50  
60  
70  
80  
90  
100  
110  
120  
130  
140  
150  
160  
170  
180  
190  
200  
210  
220  
230  
240  
250  
260  
270  
280  
290  
300  
310  
320  
330  
340  
350  
360  
370  
380  
390  
400  
410  
420  
430  
440  
450  
460  
470  
480  
490  
500





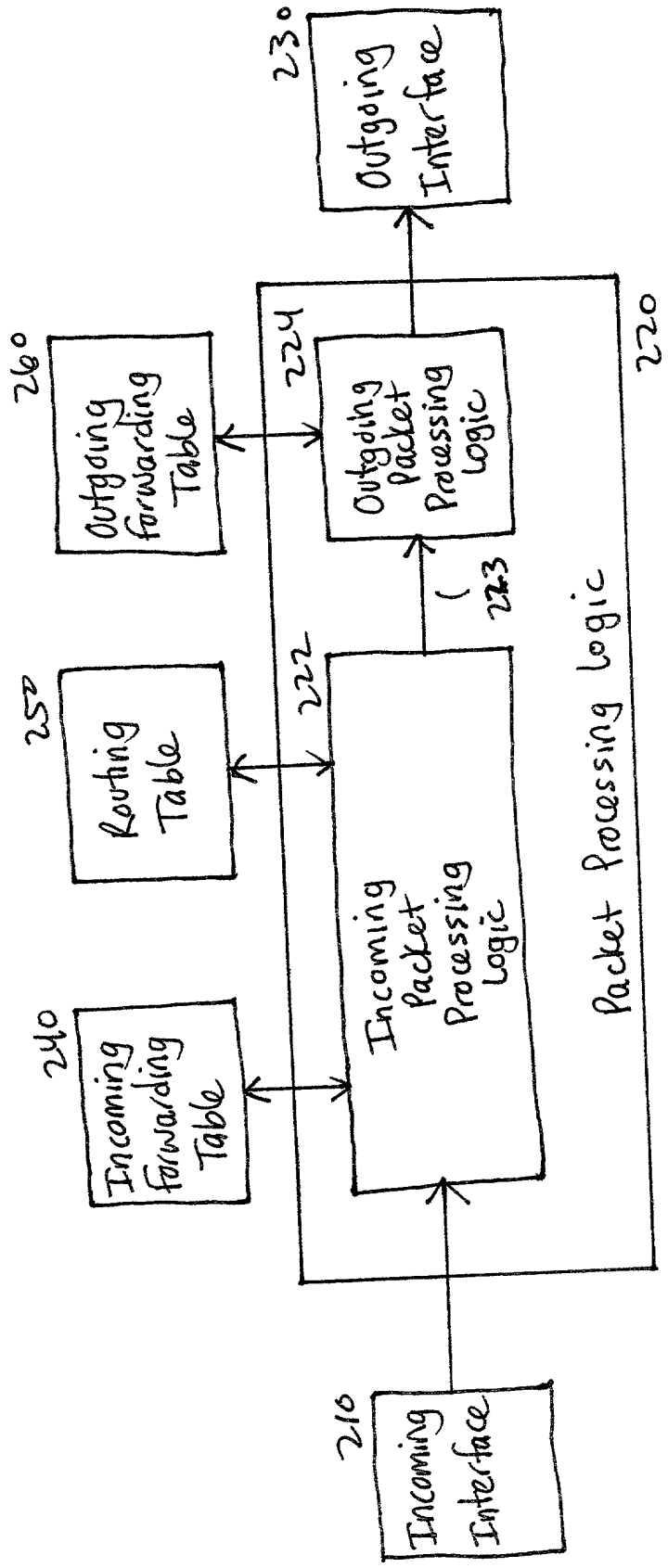


FIG. 2 102, 106



008120" DESBTS60

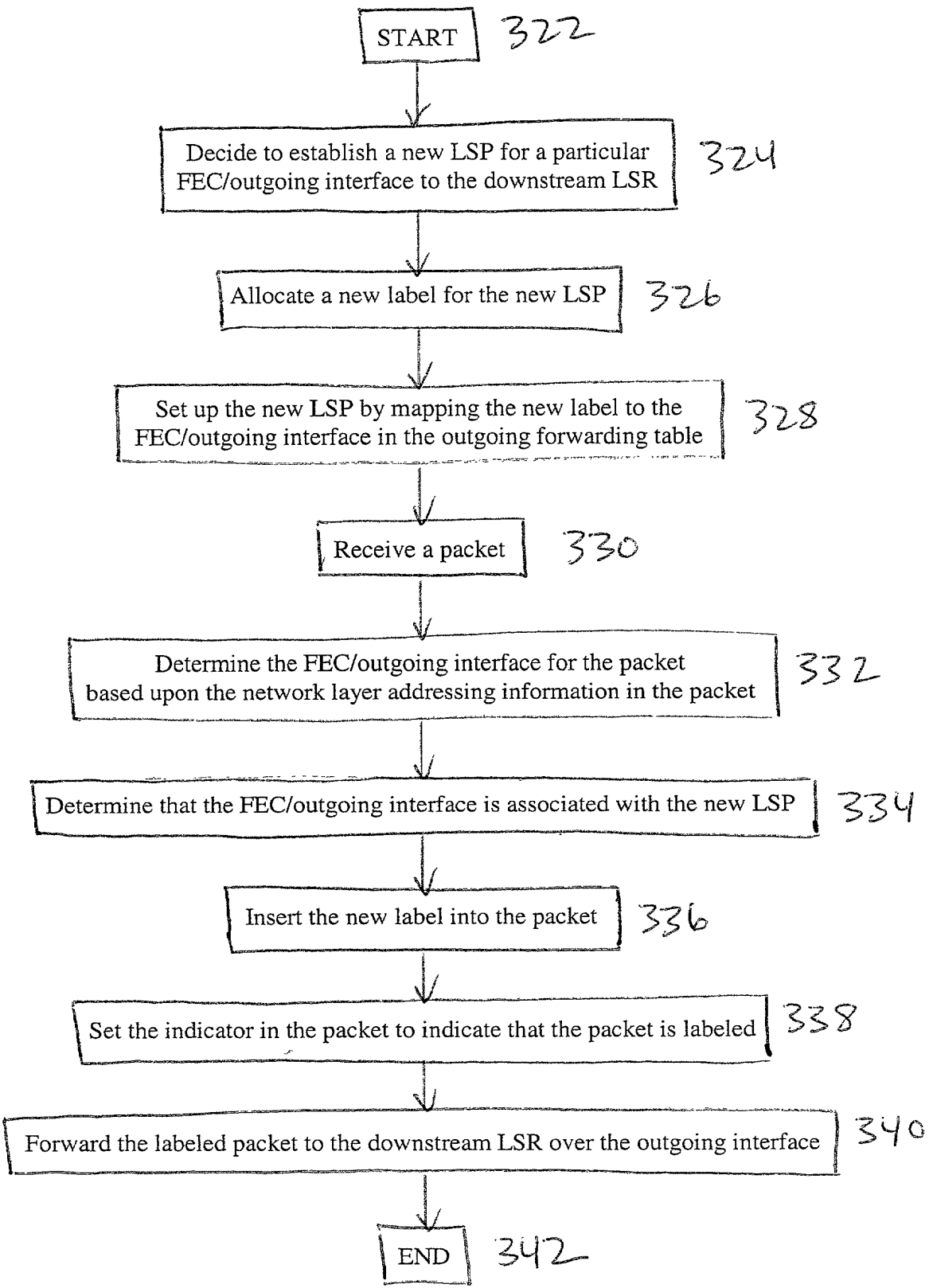


FIG. 3B 320

09618530 071800

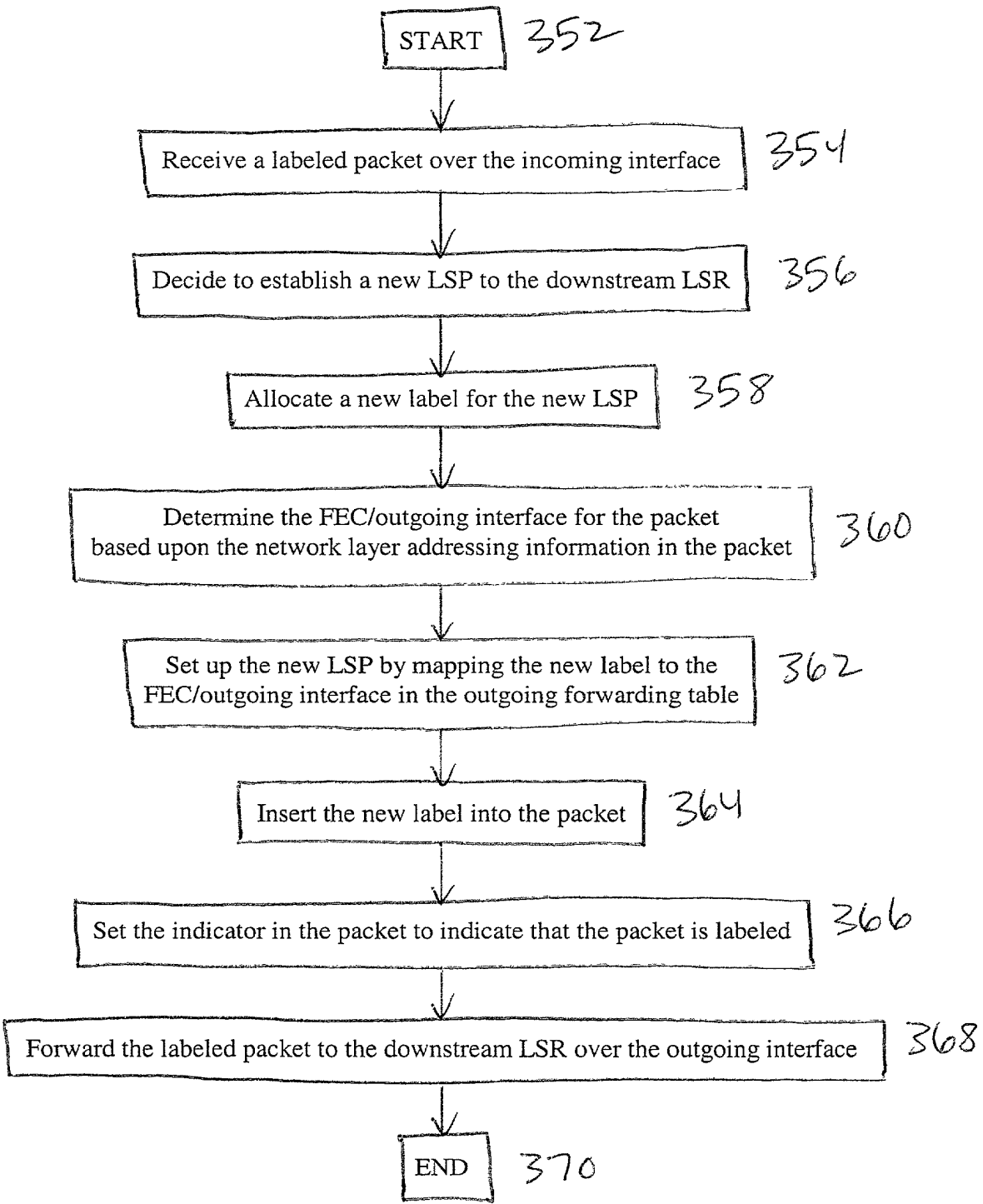


FIG. 3C 350

START 402

Receive a labeled packet including a new label from the upstream LSR over an incoming interface 404

Determine the FEC and outgoing interface for the packet based upon the network layer addressing information in the packet 406

Set up a label switched path by adding the new label to the incoming forwarding table 408

Forward the packet over the outgoing interface 410

END 499

FIG. 4 400

09518530.071800







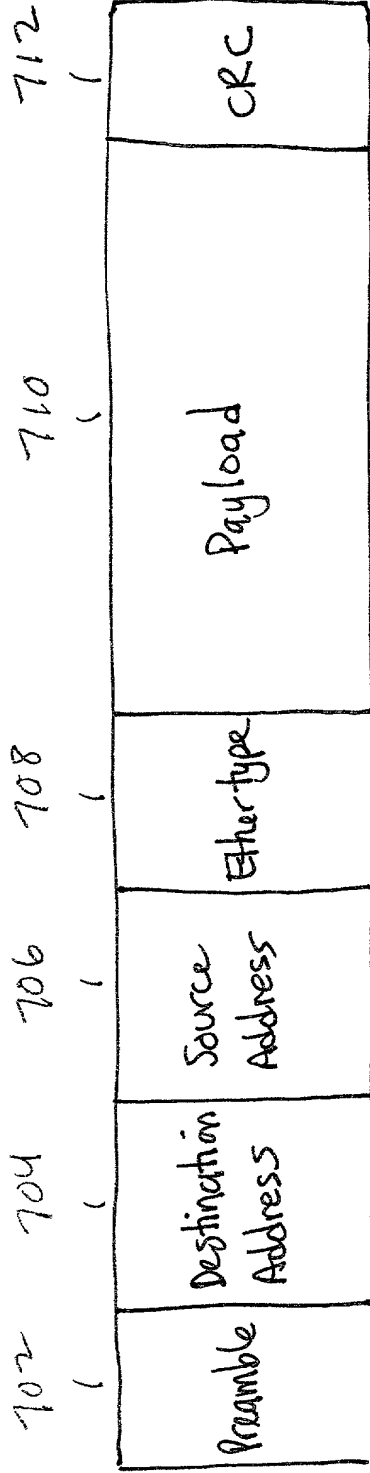


FIG. 7 700

003720" 0E58T960

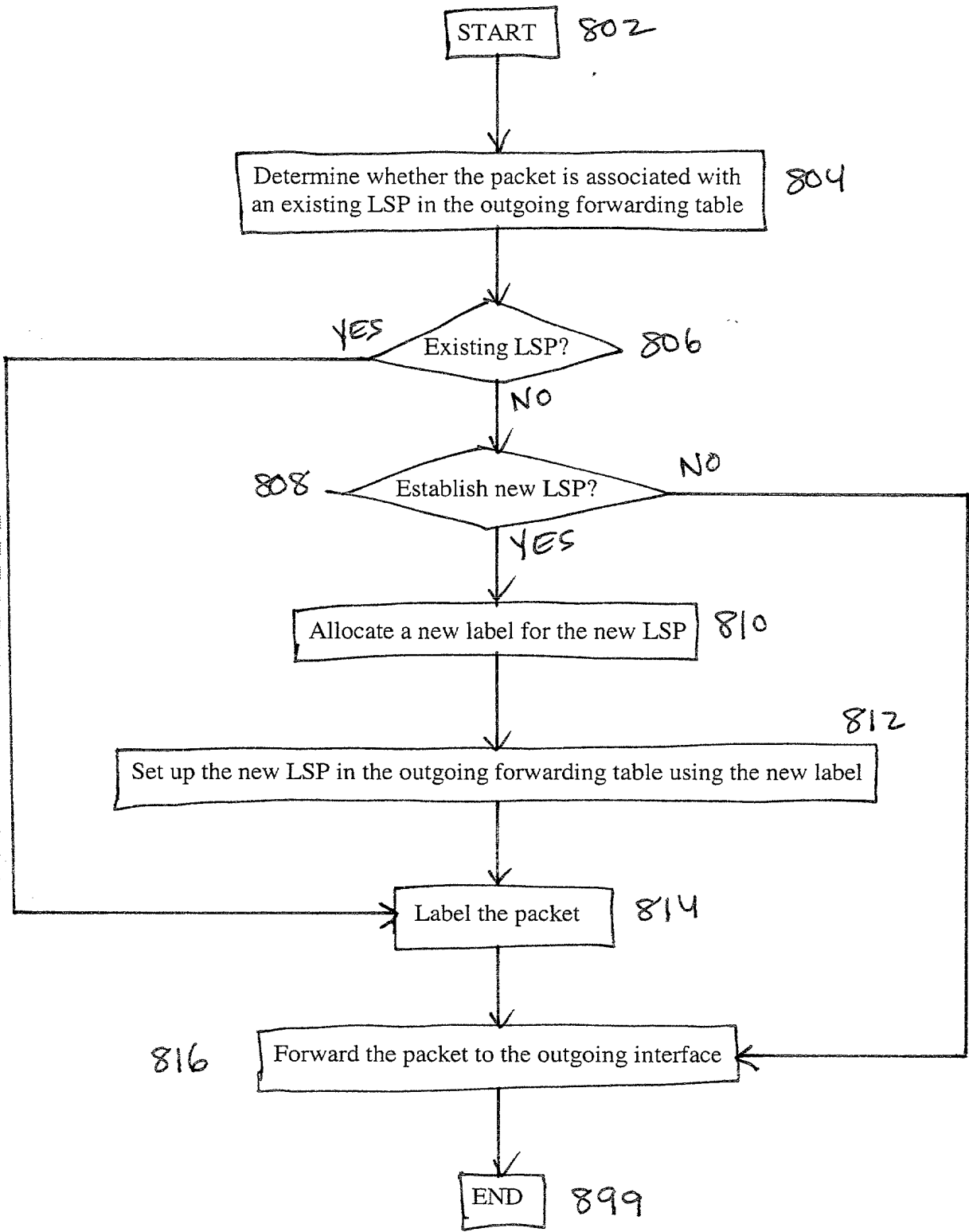


FIG. 8 800

260

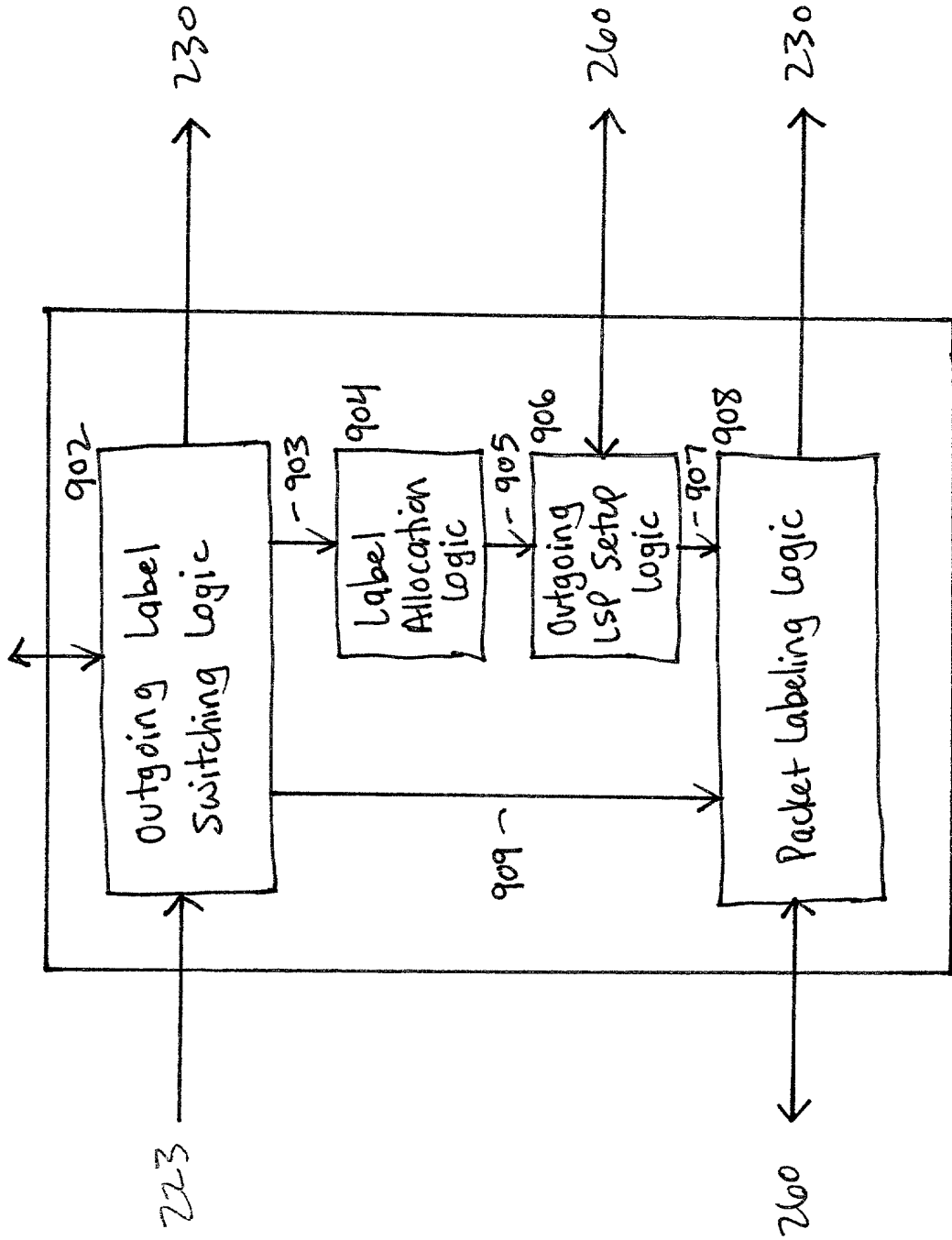


FIG. 9 226

008740 DE587960

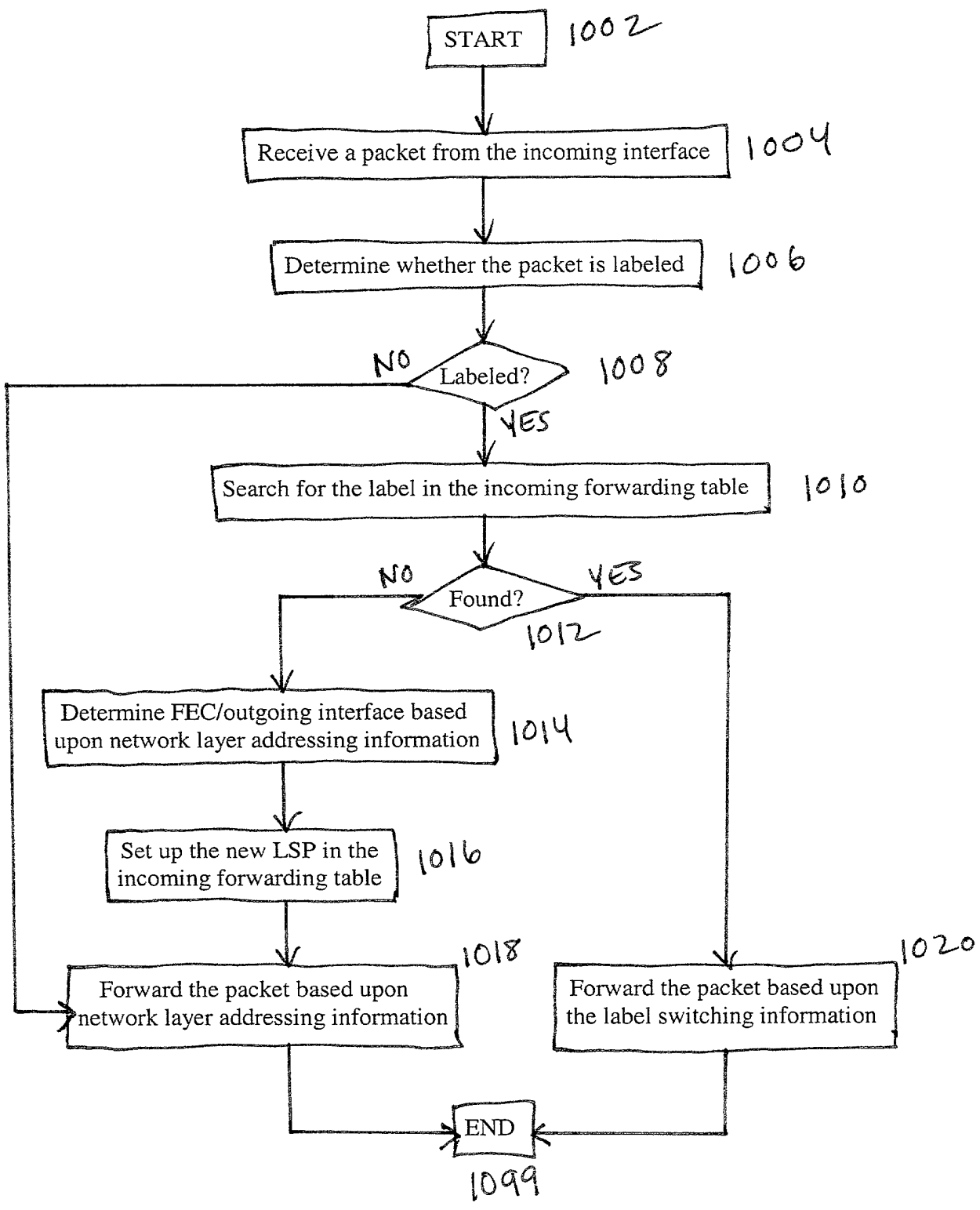


FIG. 10 1000

250

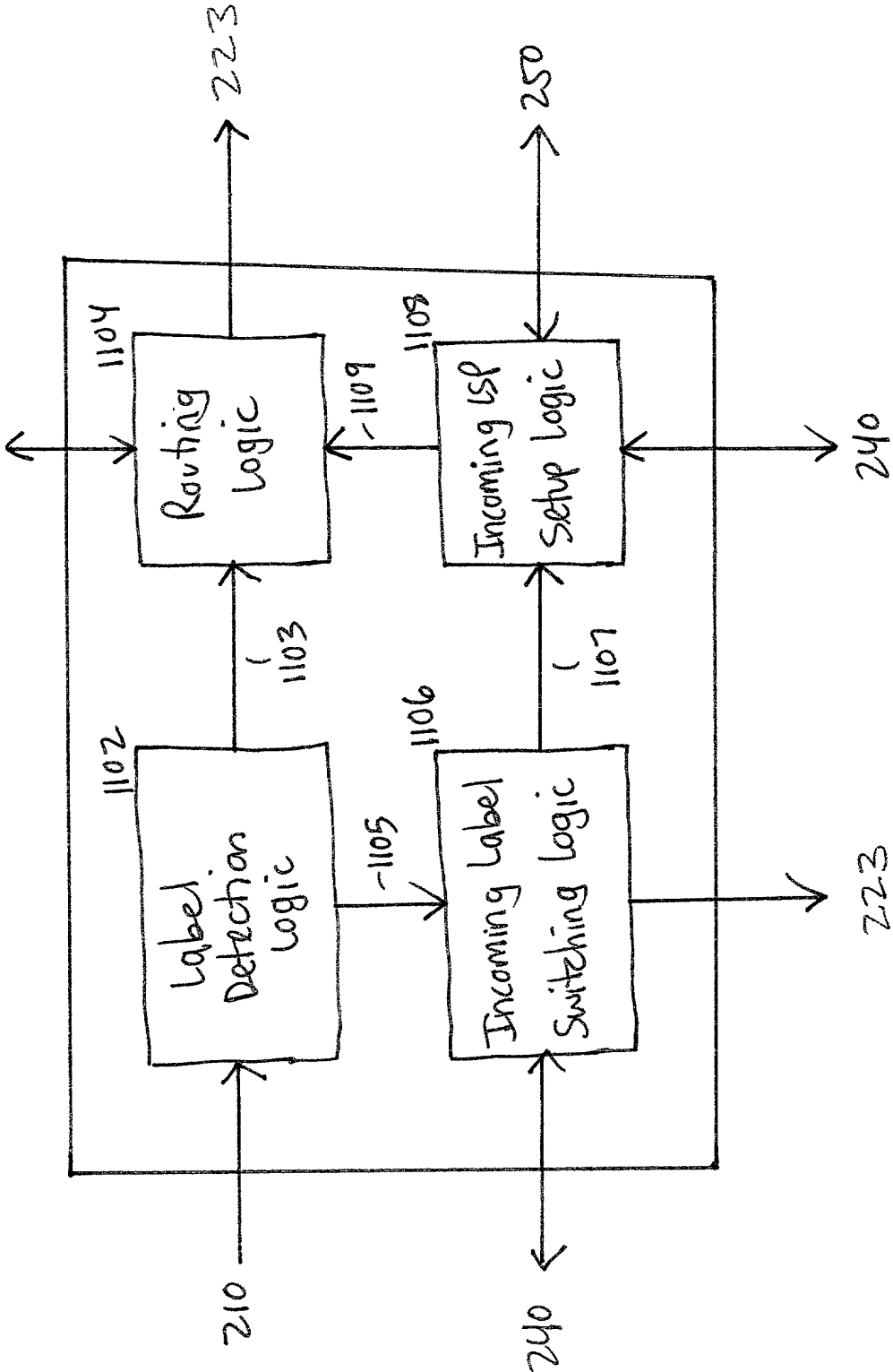


FIG. 11 222

Docket No.  
2204/A21

# Declaration and Power of Attorney For Patent Application

## English Language Declaration

As a below named inventor, I hereby declare that:

My residence, post office address and citizenship are as stated below next to my name,

I believe I am the original, first and sole inventor (if only one name is listed below) or an original, first and joint inventor (if plural names are listed below) of the subject matter which is claimed and for which a patent is sought on the invention entitled

**SYSTEM, DEVICE, AND METHOD FOR ESTABLISHING AND REMOVING A LABEL SWITCHED PATH IN A COMMUNICATION NETWORK**

the specification of which

(check one)

is attached hereto.

was filed on \_\_\_\_\_ as United States Application No. or PCT International Application Number \_\_\_\_\_ and was amended on \_\_\_\_\_ (if applicable)

I hereby state that I have reviewed and understand the contents of the above identified specification, including the claims, as amended by any amendment referred to above.

I acknowledge the duty to disclose to the United States Patent and Trademark Office all information known to me to be material to patentability as defined in Title 37, Code of Federal Regulations, Section 1.56.

I hereby claim foreign priority benefits under Title 35, United States Code, Section 119(a)-(d) or Section 365(b) of any foreign application(s) for patent or inventor's certificate, or Section 365(a) of any PCT International application which designated at least one country other than the United States, listed below and have also identified below, by checking the box, any foreign application for patent or inventor's certificate or PCT International application having a filing date before that of the application on which priority is claimed.

Prior Foreign Application(s)			Priority Not Claimed
_____	_____	_____	<input type="checkbox"/>
(Number)	(Country)	(Day/Month/Year Filed)	
_____	_____	_____	<input type="checkbox"/>
(Number)	(Country)	(Day/Month/Year Filed)	
_____	_____	_____	<input type="checkbox"/>
(Number)	(Country)	(Day/Month/Year Filed)	

DOCKET NO. 2204/A21

I hereby claim the benefit under 35 U.S.C. Section 119(e) of any United States provisional application(s) listed below:

_____	_____
(Application Serial No.)	(Filing Date)
_____	_____
(Application Serial No.)	(Filing Date)
_____	_____
(Application Serial No.)	(Filing Date)

I hereby claim the benefit under 35 U. S. C. Section 120 of any United States application(s), or Section 365(c) of any PCT International application designating the United States, listed below and, insofar as the subject matter of each of the claims of this application is not disclosed in the prior United States or PCT International application in the manner provided by the first paragraph of 35 U.S.C. Section 112, I acknowledge the duty to disclose to the United States Patent and Trademark Office all information known to me to be material to patentability as defined in Title 37, C. F. R., Section 1.56 which became available between the filing date of the prior application and the national or PCT International filing date of this application:

_____	_____	_____
(Application Serial No.)	(Filing Date)	(Status) (patented, pending, abandoned)
_____	_____	_____
(Application Serial No.)	(Filing Date)	(Status) (patented, pending, abandoned)
_____	_____	_____
(Application Serial No.)	(Filing Date)	(Status) (patented, pending, abandoned)

I hereby declare that all statements made herein of my own knowledge are true and that all statements made on information and belief are believed to be true; and further that these statements were made with the knowledge that willful false statements and the like so made are punishable by fine or imprisonment, or both, under Section 1001 of Title 18 of the United States Code and that such willful false statements may jeopardize the validity of the application or any patent issued thereon.

003740" DE 517 960

POWER OF ATTORNEY: As a named inventor, I hereby appoint the following attorney(s) and/or agent(s) to prosecute this application and transact all business in the Patent and Trademark Office connected therewith. *(list name and registration number)*

Bruce D. Sunstein	Reg. No. 27,234	Jay Sandvos	Reg. No. 43,900
Robert M. Asher	Reg. No. 30,445	Sonia K. Guterman	Reg. No. 44,729
Timothy M. Murphy	Reg. No. 33,198	Keith J. Wood	Reg. No. 45,235
Steven G. Saunders	Reg. No. 36,265	Mary M. Steubing	Reg. No. 37,946
Harriet M. Strimpel	Reg. No. 37,008	Christopher J. Cianciolo	Reg. No. 42,417
Samuel J. Petuchowski	Reg. No. 37,910	Lindsay J. McGuinness	Reg. No. 38,549
Jeffrey T. Klayman	Reg. No. 39,250		
John J. Stickevers	Reg. No. 39,387		
Herbert A. Newborn	Reg. No. 42,031		
Elizabeth P. Morano	Reg. No. 42,904		
Jean M. Tibbetts	Reg. No. 43,193		

Send Correspondence to: **Jeffrey T. Klayman**  
**Bromberg & Sunstein LLP**  
 125 Summer Street  
 Boston, MA 02110

Direct Telephone Calls to: *(name and telephone number)*  
**Jeffrey T. Klayman at (617) 443-9292**

03/20/00 08:58:50

Full name of sole or first inventor <b>Loa Andersson</b>	Date
Sole or first inventor's signature	
Residence <b>Skovlevagen 17, 125 33 Alvsjo, Sweden</b>	
Citizenship <b>Sweden</b>	
Post Office Address <b>Same as residence</b>	

Full name of second inventor, if any <b>Tove Madsen</b>	Date
Second inventor's signature	
Residence <b>Konvaljebacken 6, 142 64 Trangsund, Sweden</b>	
Citizenship <b>Sweden</b>	
Post Office Address <b>Same as residence</b>	



OFFICE OF THE SECRETARY

Full name of third inventor, if any <b>Kenneth Sundell</b>	
Third inventor's signature	Date
Residence <b>Kanslersvagen 15, 128 38 Skarpnack, Sweden</b>	
Citizenship <b>Sweden</b>	
Post Office Address <b>Same as residence</b>	

Full name of fourth inventor, if any	
Fourth inventor's signature	Date
Residence	
Citizenship	
Post Office Address	

Full name of fifth inventor, if any	
Fifth inventor's signature	Date
Residence	
Citizenship	
Post Office Address	

Full name of sixth inventor, if any	
Sixth inventor's signature	Date
Residence	
Citizenship	
Post Office Address	